

# Deerlodge “Lookie Loo”

This unique public art project will feature original artwork in two identical public restroom stalls located at Deerlodge Park in Dinosaur National Monument, the gateway to the Yampa Canyon! The theme is “Confluence to Confluence” and should highlight the natural and physical environment of the Yampa River between its confluence with the Little Snake River in Lily Park and, 48 miles downstream, its confluence with the Green River in Echo Park. Artists’ submissions should include an illustrated map of the area with place/feature names and imagery of fundamental features identified for this stretch of the Yampa River. Draw focus on the landscape and elements that have supported and attracted human communities to this area for thousands of years, but do not include portrayal of people or human-built structures. Organized by Steamboat Creates and sponsored by People in Parks, this unique approach to river education and outreach is the first “Lookie Loo” project. These public art installations in restrooms at recreation access sites along rivers in Northwest Colorado and Northeast Utah highlight the natural and cultural importance of our rivers.

**Target population:** Commercial and private rafters, campers, national park visitors, art appreciators.

**Criteria:** Artistic Excellence, Compatibility with Site, Professional Presentation, Fits the Brief,

**Deadline:** Submission through May 30, 2025

**Installation window:** September 28, 2025

**Applications:** [www.steamboatcreates.org/opportunity](http://www.steamboatcreates.org/opportunity)

**Budget:** \$20,000

Honorarium: \$15,000

Required Materials: \$5,000

\*polytab application required

**Size:** 2 identical stalls – interior walls

North 88"x90"      South: 48"x88"

East: 63"x88"      West: 64"x88"

## “Must have” fundamental features

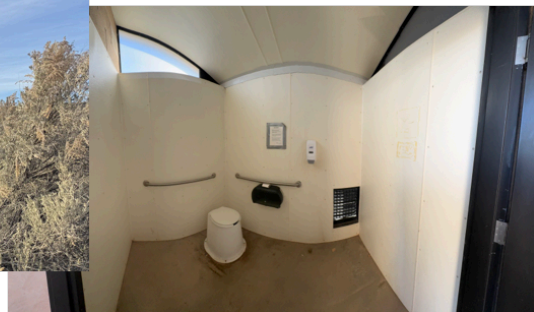
- Snowmelt-driven hydrograph/largest and last free-flowing tributary of the Colorado River
- Elk herds
- Cottonwood galleries
- Sediment (delivered by the Little Snake River and carried by the Yampa) and sand bars
- Geology (Three primary layers: Madison & Morgan limestone, Weber sandstone)
- Peregrine falcon
- Fish: Four federally listed fish (humpback chub, bonytail chub, Colorado pikeminnow, razorback sucker; particular emphasis on pikeminnow and razorback sucker because spawning bars are in Yampa Canyon) roundtail chub (state species of concern)
- Park rock cress (*Boechea fernaldiana ssp. Vivariensis*)
- Confluences as sacred spaces.
- Map with specific place names (see list) from Little Snake River to Echo Park

## Other features of value

- Paleozoic fossils (crinoids, corals, shells)
- Ponderosa pines
- Bighorn sheep
- River otters
- Dark skies
- Canyon wren
- Course woody debris
- Aquatic macroinvertebrates (stoneflies, mayflies, dragonflies)
- Sandstone alcoves with hanging gardens
- Pinyon and juniper communities
- Yampa Canyon (the last 47 miles of the 200+ miles of Yampa River)

## Map place names

- "You Are Here" (at Deerlodge)
- Named rapids (Tepee Rapid, Little Joe Rapid, Five Springs Rapid, Big Joe Rapid, Warm Springs Rapid)
- Lily Park
- Deerlodge Park
- Vale of Tears/Disappointment Draw
- Corral Springs Draw
- Thanksgiving Gorge
- Tepee Draw
- Haystack Rock
- Bear Draw
- Five Spring Draw
- Starvation Valley
- Johnson Canyon
- Bull Canyon
- Cleopatra's Couch
- Grand Overhang
- Hells Canyon
- Red Rock Canyon
- Tiger Wall
- Outlaw Park
- Sand Canyon
- Jenny Lind Rock
- Echo Park
- Little Snake River
- Yampa River
- Green River



**Short Description:** The 'Lookie Loo' public art project seeks original artwork in two public restroom stalls in Dinosaur National Monument, the gateway to the Yampa Canyon! The theme is "Confluence to Confluence" of the Yampa River between Little Snake and the Green River. Submissions should include an illustrated map with names and imagery of natural features. Organized by Steamboat Creates and sponsored by People in Parks, this unique approach to river education at recreation sites in Northwest Colorado and Northeast Utah highlights natural and cultural importance of rivers.